

# Christmas Appeal from Bethlehem

Christmas ~~December~~ **December, 2003**



People's Committee against the Segregation Wall - Bethlehem

## The WALL Strangling Bethlehem "the Birthplace of Jesus Christ"

*We, residents of Bethlehem district - Christians and Muslims - convey to you our concern of the Israeli Segregation Wall and land confiscation activities in Bethlehem district, which has recently intensified on our lands:*

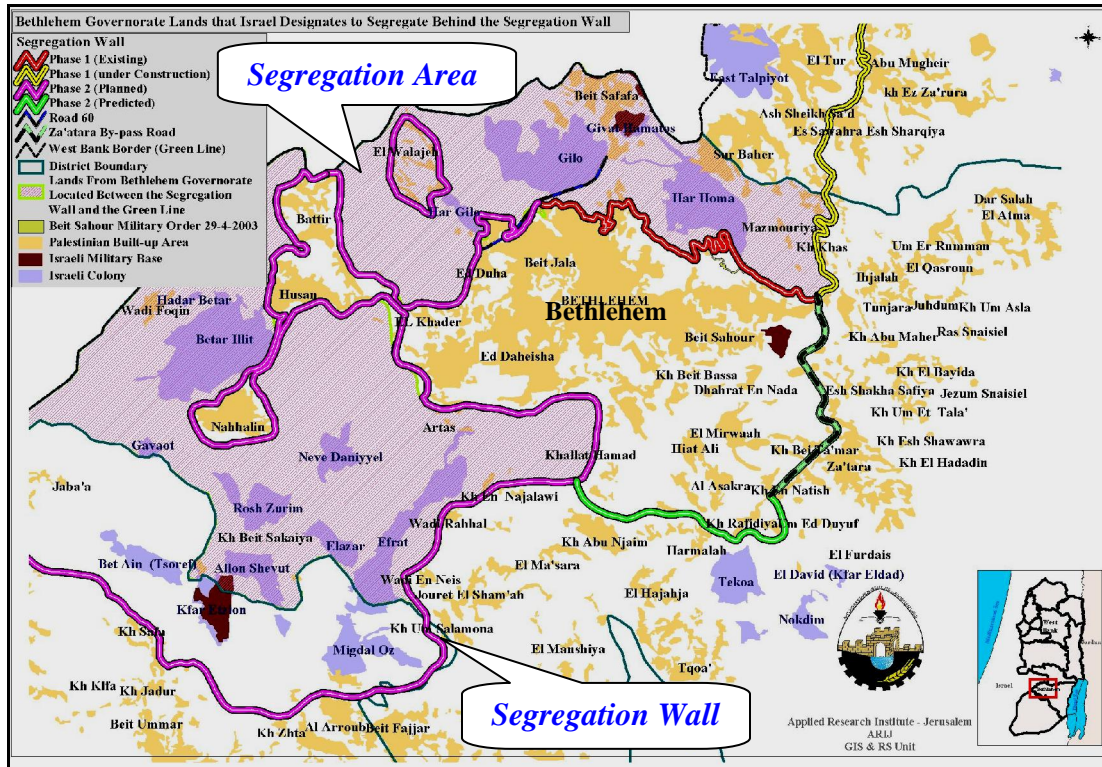
- Severing the umbilical cord between Bethlehem the birth place of Jesus Christ and the holy city of Jerusalem where the government of Israel constructed a Segregation Wall at the northern side of the town of Bethlehem with a length of 10.5 km and a width that varies between 40 to 70 meters as a buffer zone. This zone consists of barbed wires and trenches, military roads and a dirt path at the sides, a 5 meters high electrified concrete wall and metal fence supplied with sensors and cameras in the middle, and closed the main road between the church of the nativity in Bethlehem and the holy places in Jerusalem,*
- The Israeli unilateral plan of Segregation is recently being implemented on the expense of our lands. A total of 7000 hectares (70 km<sup>2</sup>) will be segregated behind this Wall from Bethlehem district and will be annexed to Israel. More than 1600 hectares of the area to be segregated are owned by Christian Palestinians living in the three towns of Bethlehem, Beit Jala, and Beit Sahour. The wall will slay all our fertile agricultural lands located at the northern, western and southern parts of Bethlehem district.*

pdfMachine

A pdf writer that produces quality PDF files with ease!

Produce quality PDF files in seconds and preserve the integrity of your original documents. Compatible across nearly all Windows platforms, simply open the document you want to convert, click "print", select the "Broadgun pdfMachine printer" and that's it! Get yours now!

- *The Segregation Wall will severely affect us directly or indirectly and cause destruction to our private and public properties. The Wall will swallow the left open spaces in Bethlehem and strangle the built-up areas where we live.*



*Map Courtesy of ARIJ, www.arij.org*

- *However, all Israeli activities that are recently taking place hinder the viability of Bethlehem district; block the way in front of Bethlehem's future sustainable development.*
- *The Wall is a collective punishment and a human right violation, Israel through its construction opposes the peace objectives, the International laws and UN resolutions of the will of the International community to give peace and stability in the region.*

*Therefore, we ask the peace loving people of the World, Christian societies and the International community to interfere and stop the Segregation Wall in Bethlehem, in order to bring stability, justice and peace.*

*Our inspirations need your support and assistance to Stop immediately and remove the Segregation Wall*

